



2 Bedrooms



2 Bathrooms



1 Reception



EPC Band B

Council Tax Band:  
E £0.00 ()



Luxurious 2-bed ground-floor apartment in Gleneagle Manor, Harpenden High St; high ceilings, private terrace, allocated parking.

### Description

Luxurious two-bedroom ground-floor apartment in Gleneagle Manor, Harpenden High Street. Features private front door, open-plan kitchen/living area with integrated appliances: oven, fridge/freezer, dishwasher, and washer/dryer. Master bedroom has en-suite; second double bedroom served by separate family bathroom. High ceilings, underfloor heating, and large bay windows offer space and luxury. Includes terraced area from the lounge, allocated parking, and underground storage. New flooring and fresh paint before move-in.

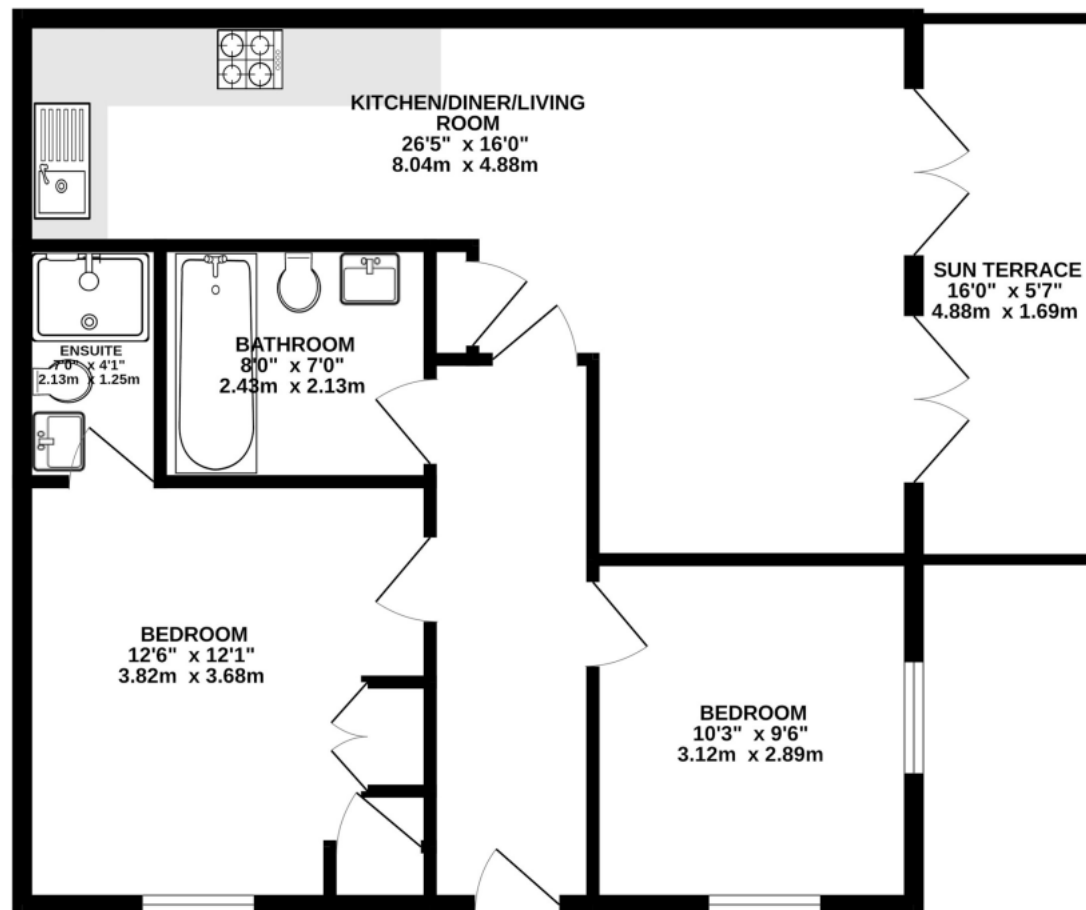












TOTAL FLOOR AREA : 692 sq.ft. (64.3 sq.m.) approx.

This floorplan is for illustration purposes only. The measurements and position of each element are approximate and must be viewed as such.

**Important Information** These particulars do not constitute an offer or contract in whole or part. The statements contained herein are made without responsibility on the part of Ashtons or the vendors and they cannot be relied upon as representatives of fact. In respect of floor plans, these are for illustrative purposes only. The measurement and position of each element is approximate and must be viewed as such. Intending purchasers should therefore satisfy themselves by inspection or otherwise as to their correctness. The vendors do not make or give, and neither Ashtons nor any person in their employment has any authority to make or give, any representation or warranty whatsoever in relation to this property. We offer a wide range of services through third party providers including solicitors, surveyors, removal firms, mortgage providers and EPC suppliers. We receive additional payments for administering suppliers quoting software and making referrals. You are not under any obligations to use these services and it is your discretion whether you choose to deal with these parties or your own preferred supplier. You should be aware the average payment we received in 2024 equated to £29.76 per referral.