 2 Bedrooms

 2 Bathrooms

 1 Reception

 EPC Band D

Council Tax Band:
E £2,994.97 (2026/2027)

 **ashtons**
for life's great moves

Lower Kings Road, Berkhamsted, HP4 2FN
£1,950 PCM

Beautifully presented duplex apartment, nearly 1000 sq ft, with stunning canal views.

Description

This magnificent duplex apartment has two floors and is approaching 1000 sq ft with stunning canal views. There is a spacious entrance hall with stairs to the upper floor and a cloaks cupboard. This then opens to the reception room with triple aspect windows so has plenty of natural light. The kitchen/breakfast room is fully fitted with integrated appliances and boasts solid granite worktops. Moving to the upper floor, there are two double bedrooms. The main bedroom has dual aspect windows and an ensuite shower room, there is also a further bathroom on this floor. There is gated access to lower ground floor parking, which is covered and close to the communal entrance with a lift serving all floors.

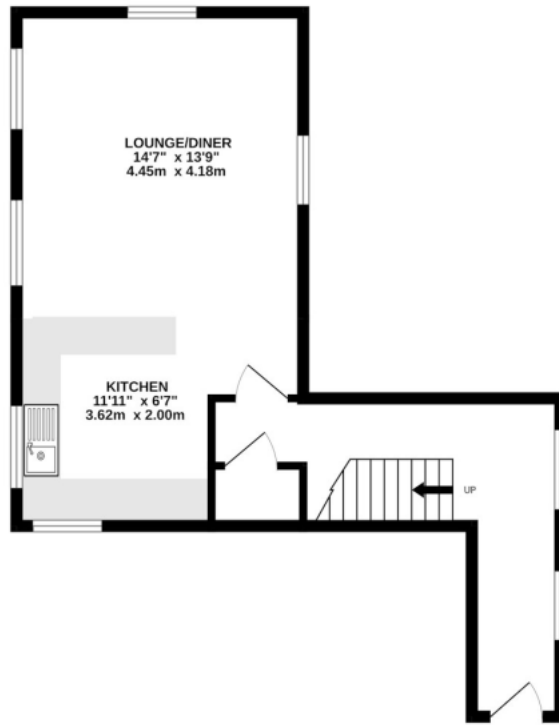
Location

Located in one of Berkhamsted's most exclusive locations, being in the centre of town with the High Street only a short stroll away and with the station on your doorstep.

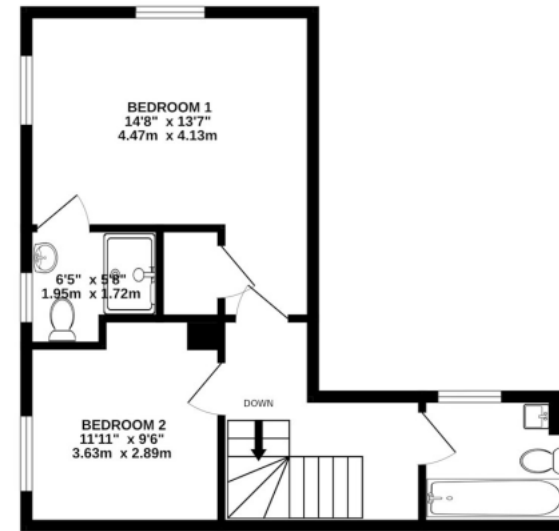




GROUND FLOOR
450 sq.ft. (41.8 sq.m.) approx.



1ST FLOOR
459 sq.ft. (42.6 sq.m.) approx.



TOTAL FLOOR AREA : 942sq.ft. (87.5 sq.m.) approx.

Whilst every attempt has been made to ensure the accuracy of the floorplan contained here, measurements of doors, windows, rooms and any other items are approximate and no responsibility is taken for any error, omission or mis-statement. This plan is for illustrative purposes only and should be used as such by any prospective purchaser. The services, systems and appliances shown have not been tested and no guarantee as to their operability or efficiency can be given.
Made with Metropix ©2023

Important Information These particulars do not constitute an offer or contract in whole or part. The statements contained herein are made without responsibility on the part of Ashtons or the vendors and they cannot be relied upon as representatives of fact. In respect of floor plans, these are for illustrative purposes only. The measurement and position of each element is approximate and must be viewed as such. Intending purchasers should therefore satisfy themselves by inspection or otherwise as to their correctness. The vendors do not make or give, and neither Ashtons nor any person in their employment has any authority to make or give, any representation or warranty whatsoever in relation to this property. We offer a wide range of services through third party providers including solicitors, surveyors, removal firms, mortgage providers and EPC suppliers. We receive additional payments for administering suppliers quoting software and making referrals. You are not under any obligations to use these services and it is your discretion whether you choose to deal with these parties or your own preferred supplier. You should be aware the average payment we received in 2024 equated to £29.76 per referral.