
 5 bedrooms

 3 bathrooms

 2 receptions

 EPC Band D

Freehold

Council Tax Band:
F £0.00 ()

Local Authority:
Dacorum Borough Council



 **ashtons**
for life's great moves

North Road, Berkhamsted, Hertfordshire, HP4 3DU

Guide price of £1,250,000

Stunning five-bedroom Victorian house on premier North Road, a short stroll from the High Street and train station.

Description

This five-bedroom house is on a quiet, central Berkhamsted road in the conservation area. Enter through the stained-glass front door into a hallway with traditional black and white tiled flooring, showcasing elegance from the outset. The living room features high ceilings, front aspect bay windows, and a charming fireplace. The stunning kitchen/dining/family room at the rear boasts high-end appliances, a boiling water tap, and an island with a hob and storage underneath. There's a store room and a downstairs w/c with basin. The dining and seating areas offer garden views through bi-fold doors. The first floor is beautifully decorated with four bedrooms, and the principal bedroom enjoys a large ensuite with a separate shower. The second-floor bedroom also has an ensuite and lovely views. The west-facing garden is perfect for summer entertaining with a paved patio and landscaped lawn. A superb family home in a sought-after Berkhamsted location. Council Tax Band: F £3,210.34.

Location

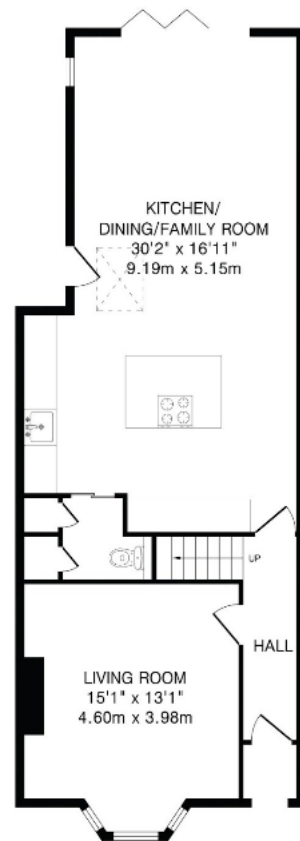
Located on a popular road near Berkhamsted High Street amenities, excellent schools, and mainline station with commute to Euston, London.



Buyers Information: - In compliance with the UK's Anti Money Laundering (AML) regulations, we are required to confirm the identity of all prospective buyers at the point of an offer being accepted and use a third party, Identity Verification System to do so. There is a nominal charge of £48 (per person) including VAT for this service. For more information, please refer to the terms and conditions section of our website.



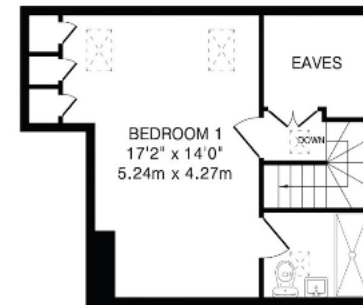




Ground Floor
726 sq.ft.(67.4 sq.m)approx.



First Floor
683 sq.ft.(63.4 sq.m)approx.



Second Floor
272 sq.ft.(25.3 sq.m)approx.

TOTAL FLOOR AREA: 1681 sq.ft.(156.1 sq.m)approx.

This floorplan is for illustration purposes only. The measurements and position of each element are approximate and must be viewed as such.

Important Information These particulars do not constitute an offer or contract in whole or part. The statements contained herein are made without responsibility on the part of Ashtons or the vendors and they cannot be relied upon as representatives of fact. In respect of floor plans, these are for illustrative purposes only. The measurement and position of each element is approximate and must be viewed as such. Intending purchasers should therefore satisfy themselves by inspection or otherwise as to their correctness. The vendors do not make or give, and neither Ashtons nor any person in their employment has any authority to make or give, any representation or warranty whatsoever in relation to this property. We offer a wide range of services through third party providers including solicitors, surveyors, removal firms, mortgage providers and EPC suppliers. We receive additional payments for administering suppliers quoting software and making referrals. You are not under any obligations to use these services and it is your discretion whether you choose to deal with these parties or your own preferred supplier. You should be aware the average payment we received in 2024 equated to £29.76 per referral.