
 4 Bedrooms

 2 Bathrooms

 3 Receptions

 Private Garden

 Driveway

Freehold

Council Tax Band:  
F £3,539.50 (2026/2027)

Local Authority:  
Dacorum Borough Council

  
for life's great moves

Ashlyns Court, Berkhamsted, HP4 3BU  
Guide price of £1,200,000

## Superb 4-bedroom family home in central Berkhamsted with double garage & parking.

### Description

This beautifully presented four-bedroom detached family home offers spacious and versatile accommodation of almost 2000 sq. ft., including a detached double garage. Maintained to an excellent standard, the property is ready for immediate occupation, combining generous living space with a south-east facing private garden. The ground floor features a welcoming entrance hall leading to a bright dual-aspect sitting room, perfect for family living and entertaining. The kitchen/breakfast room offers ample worktop and storage space, flowing into the dining room with access to a bright conservatory. A separate office is ideal for home working and a cloakroom completes the ground floor. The first floor offers four well-proportioned bedrooms. The principal bedroom has an en-suite shower room, while the others are served by a modern family bathroom. Outside, the private south-east facing garden is perfect for al fresco dining and family activities. The substantial detached double garage features an EV charging point, complemented by driveway parking. Conveniently located for amenities, schools, countryside walks, and transport connections, this impressive home offers a rare opportunity to acquire a spacious and immaculately maintained family residence.

### Location

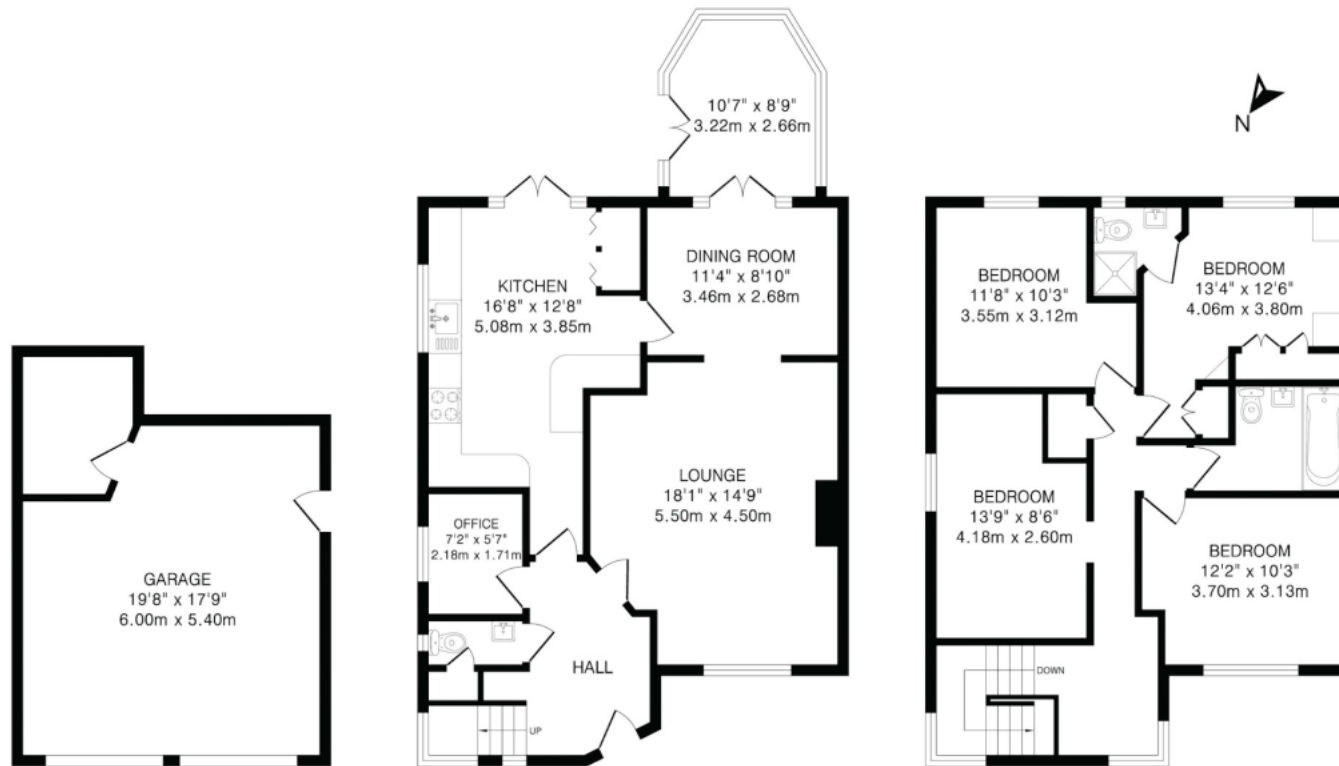
Berkhamsted is a well-connected market town in west Hertfordshire, just 30 minutes from London by train. It offers excellent schools and a wide range of shops and amenities within easy reach.



In compliance with the UK's Anti Money Laundering (AML) regulations, we are required to confirm the identity of all prospective buyers at the point of an offer being accepted and use a third party, Identity Verification System to do so. There is a nominal charge of £48 (per person) including VAT for this service. For more information, please refer to the terms and conditions section of our website.







Garage  
376 sq.ft.(34.9 sq.m)approx.

Ground Floor  
825 sq.ft.(76.6 sq.m)approx.

Second Floor  
737 sq.ft.(68.4 sq.m)approx.

TOTAL FLOOR AREA: 1938 sq.ft.(179.9 sq.m)approx.

This floorplan is for illustration purposes only. The measurements and position of each element are approximate and must be viewed as such.

**Important Information** These particulars do not constitute an offer or contract in whole or part. The statements contained herein are made without responsibility on the part of Ashtons or the vendors and they cannot be relied upon as representatives of fact. In respect of floor plans, these are for illustrative purposes only. The measurement and position of each element is approximate and must be viewed as such. Intending purchasers should therefore satisfy themselves by inspection or otherwise as to their correctness. The vendors do not make or give, and neither Ashtons nor any person in their employment has any authority to make or give, any representation or warranty whatsoever in relation to this property. We offer a wide range of services through third party providers including solicitors, surveyors, removal firms, mortgage providers and EPC suppliers. We receive additional payments for administering suppliers quoting software and making referrals. You are not under any obligations to use these services and it is your discretion whether you choose to deal with these parties or your own preferred supplier. You should be aware the average payment we received in 2024 equated to £29.76 per referral.