


 3 Bedrooms

 1 Bathroom

 1 Reception

 Private Garden

 Garage

 EPC Band C

Freehold

Council Tax Band:
D £2,330.38 (2025/2026)

Local Authority:
Dacorum



3-bed home in popular area with top schools nearby, garage, parking space, and no upper chain.

Description

A fine three-bedroom house, always popular with young families and downsizers alike. Dukes Way is located just off Bridgewater Road, leading to Berkhamsted railway station (a few minutes' walk). This well-presented house, offered with no upper chain, features a great-sized living room with a fireplace and a super kitchen with space for a dining table, fitted oven, fridge, freezer, and a large gas hob with extractor fan. There are windows and a door leading to the garden. The first floor has three bedrooms, all with fitted storage cupboards and wardrobes, and a modern family bathroom. The west-facing rear garden has a decked area perfect for summer BBQs and entertaining, low-maintenance Astro-turf lawn, a door into the garage, and a gate to the parking area.

Location

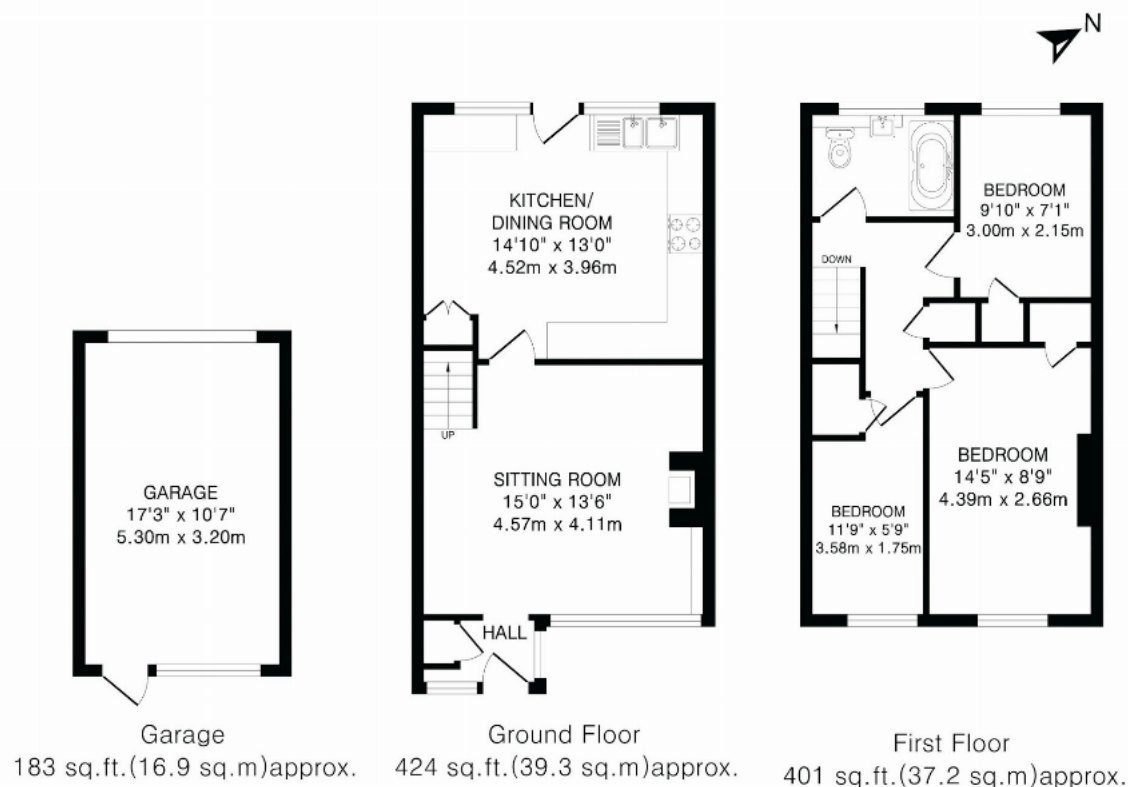
Dukes Way is a short walk from the town centre and mainline station with a rail service to Euston, London (approx. 35 mins). Nearby are top schools and sports clubs, including Berkhamsted Lawn Tennis Club, Football Club, cricket, and bowls clubs.



Buyers Information: - In compliance with the UK's Anti Money Laundering (AML) regulations, we are required to confirm the identity of all prospective buyers at the point of an offer being accepted and use a third party, Identity Verification System to do so. There is a nominal charge of £48 (per person) including VAT for this service. For more information, please refer to the terms and conditions section of our website.







This floorplan is for illustration purposes only. The measurements and position of each element are approximate and must be viewed as such.

Important Information These particulars do not constitute an offer or contract in whole or part. The statements contained herein are made without responsibility on the part of Ashtons or the vendors and they cannot be relied upon as representatives of fact. In respect of floor plans, these are for illustrative purposes only. The measurement and position of each element is approximate and must be viewed as such. Intending purchasers should therefore satisfy themselves by inspection or otherwise as to their correctness. The vendors do not make or give, and neither Ashtons nor any person in their employment has any authority to make or give, any representation or warranty whatsoever in relation to this property. We offer a wide range of services through third party providers including solicitors, surveyors, removal firms, mortgage providers and EPC suppliers. We receive additional payments for administering suppliers quoting software and making referrals. You are not under any obligations to use these services and it is your discretion whether you choose to deal with these parties or your own preferred supplier. You should be aware the average payment we received in 2024 equated to £29.76 per referral.