

 4 Bedrooms

 2 Bathrooms

 2 Receptions

Freehold



 **ashtons**  
for life's great moves

Old Church Close, Holwell, Hitchin, SG5 3GG

Guide price of £875,000

A beautiful detached family home finished to a superb spec in this sought-after village near Hitchin.

### Description

The Well is a private cul-de-sac development of six homes in Holwell, surrounded by countryside, just 3 miles from Hitchin. Plot 1 (RESERVED) is a four-bedroom detached home with 1917 sq ft of spacious accommodation, a garage, and a driveway for two vehicles. The property features a stunning kitchen/dining/family area over 30 ft wide with a feature island and bi-fold doors to the garden terrace. It includes a large lounge, a separate study, and a practical utility room with side access. The first floor boasts a principal bedroom with a walk-in dressing room and ensuite, three further double bedrooms, and a luxury family bathroom. The west-facing rear garden has mature hedging and a lawn. These homes offer a traditional exterior with contemporary interiors. Energy efficiency and a 10-year warranty ensure low maintenance. Ready in April, viewing is highly recommended to appreciate the space, specification, and quality throughout. Images are CGI and show typical specifications.

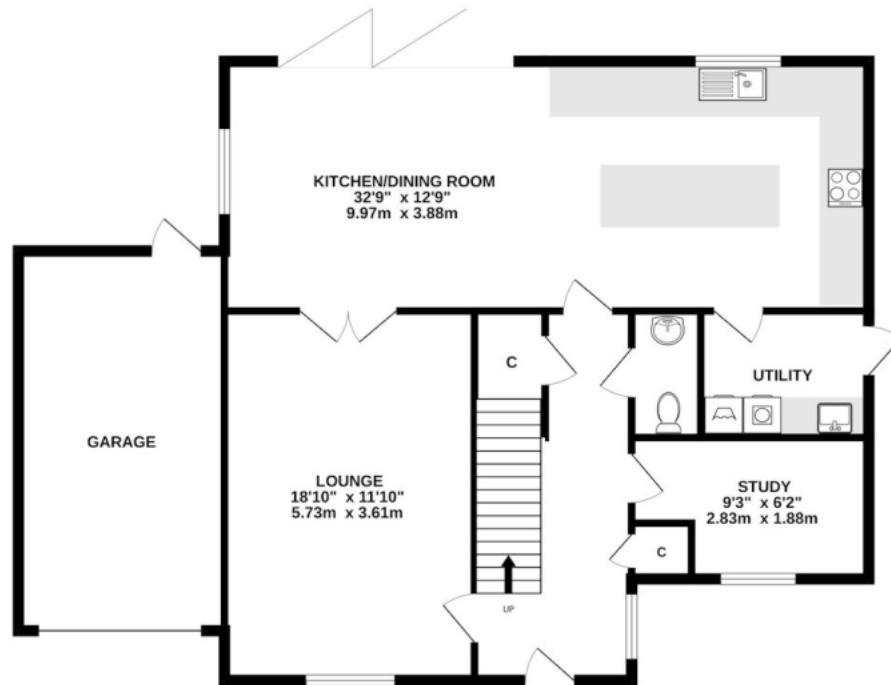


Buyers Information: - In compliance with the UK's Anti Money Laundering (AML) regulations, we are required to confirm the identity of all prospective buyers at the point of an offer being accepted and use a third party, Identity Verification System to do so. There is a nominal charge of £48 (per person) including VAT for this service. For more information, please refer to the terms and conditions section of our website.

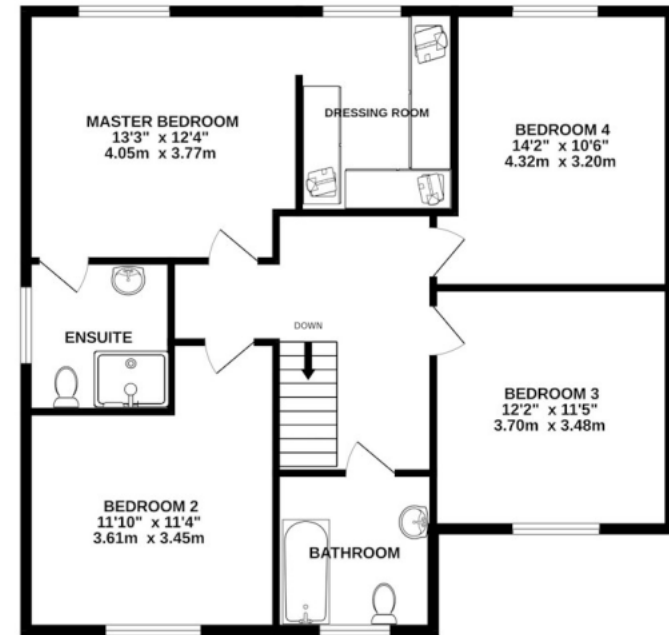




GROUND FLOOR



1ST FLOOR



## PLOT 1 THE WELL

TOTAL FLOOR AREA : 1917sq.ft. (178.1 sq.m.) approx.

Whilst every attempt has been made to ensure the accuracy of the floorplan contained here, measurements of doors, windows, rooms and any other items are approximate and no responsibility is taken for any error, omission or mis-statement. This plan is for illustrative purposes only and should be used as such by any prospective purchaser. The services, systems and appliances shown have not been tested and no guarantee as to their operability or efficiency can be given.  
Made with Metropix ©2026

**Important Information** These particulars do not constitute an offer or contract in whole or part. The statements contained herein are made without responsibility on the part of Ashtons or the vendors and they cannot be relied upon as representatives of fact. In respect of floor plans, these are for illustrative purposes only. The measurement and position of each element is approximate and must be viewed as such. Intending purchasers should therefore satisfy themselves by inspection or otherwise as to their correctness. The vendors do not make or give, and neither Ashtons nor any person in their employment has any authority to make or give, any representation or warranty whatsoever in relation to this property. We offer a wide range of services through third party providers including solicitors, surveyors, removal firms, mortgage providers and EPC suppliers. We receive additional payments for administering suppliers quoting software and making referrals. You are not under any obligations to use these services and it is your discretion whether you choose to deal with these parties or your own preferred supplier. You should be aware the average payment we received in 2024 equated to £29.76 per referral.