



3 Bedrooms



2 Bathrooms



2 Receptions

Freehold

 **ashtons**
for life's great moves

Hemel Hempstead Road, Redbourn, AL3 7DU

Guide price of £600,000

OPEN DAY - SAT 4 OCT! New 3 bed, 2 bath detached home, 891 sq ft, parking for 2, situated in the sought-after village of Redbourn.

Description

OPEN DAY - SATURDAY 4TH OCTOBER - BY APPOINTMENT ONLY!! Plot 1 Redbourn Row is a three bedroom, two bathroom detached home offering 891 sq ft of living space. This thoughtfully designed detached family home maximises every square foot with clever layouts and high specification finishes. Three well-proportioned bedrooms include a master with ensuite, complemented by a family bathroom for added convenience. The open-plan living spaces create a bright, welcoming atmosphere, while two parking spaces complete this perfect family package with modern convenience and energy-efficient design. Call now for more information or to book your appointment for the Open Day!

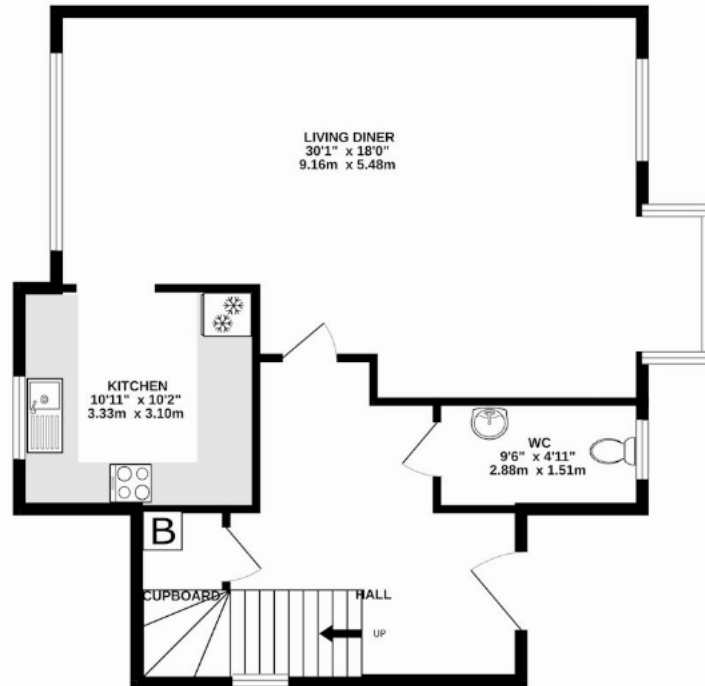


Buyers Information: - In compliance with the UK's Anti Money Laundering (AML) regulations, we are required to confirm the identity of all prospective buyers at the point of an offer being accepted and use a third party, Identity Verification System to do so. There is a nominal charge of £48 (per person) including VAT for this service. For more information, please refer to the terms and conditions section of our website.

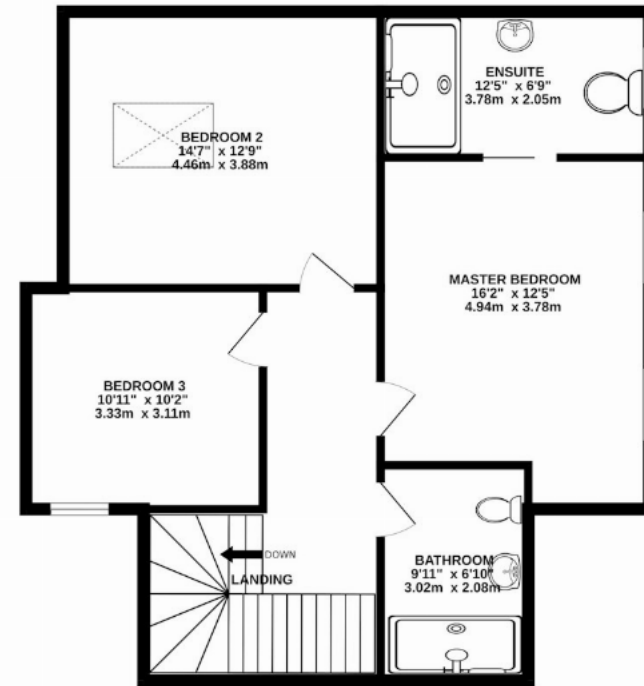




GROUND FLOOR
437 sq.ft. (40.6 sq.m.) approx.



1ST FLOOR
454 sq.ft. (42.2 sq.m.) approx.



TOTAL FLOOR AREA : 891 sq.ft. (82.8 sq.m.) approx.

Whilst every attempt has been made to ensure the accuracy of the floorplan contained here, measurements of doors, windows, rooms and any other items are approximate and no responsibility is taken for any error, omission or mis-statement. This plan is for illustrative purposes only and should be used as such by any prospective purchaser. The services, systems and appliances shown have not been tested and no guarantee as to their operability or efficiency can be given.
Made with Metropix ©2025

Important Information These particulars do not constitute an offer or contract in whole or part. The statements contained herein are made without responsibility on the part of Ashtons or the vendors and they cannot be relied upon as representatives of fact. In respect of floor plans, these are for illustrative purposes only. The measurement and position of each element is approximate and must be viewed as such. Intending purchasers should therefore satisfy themselves by inspection or otherwise as to their correctness. The vendors do not make or give, and neither Ashtons nor any person in their employment has any authority to make or give, any representation or warranty whatsoever in relation to this property. We offer a wide range of services through third party providers including solicitors, surveyors, removal firms, mortgage providers and EPC suppliers. We receive additional payments for administering suppliers quoting software and making referrals. You are not under any obligations to use these services and it is your discretion whether you choose to deal with these parties or your own preferred supplier. You should be aware the average payment we received in 2024 equated to £29.76 per referral.