



3 bedrooms



3 bathrooms



2 receptions



EPC Band C

Freehold

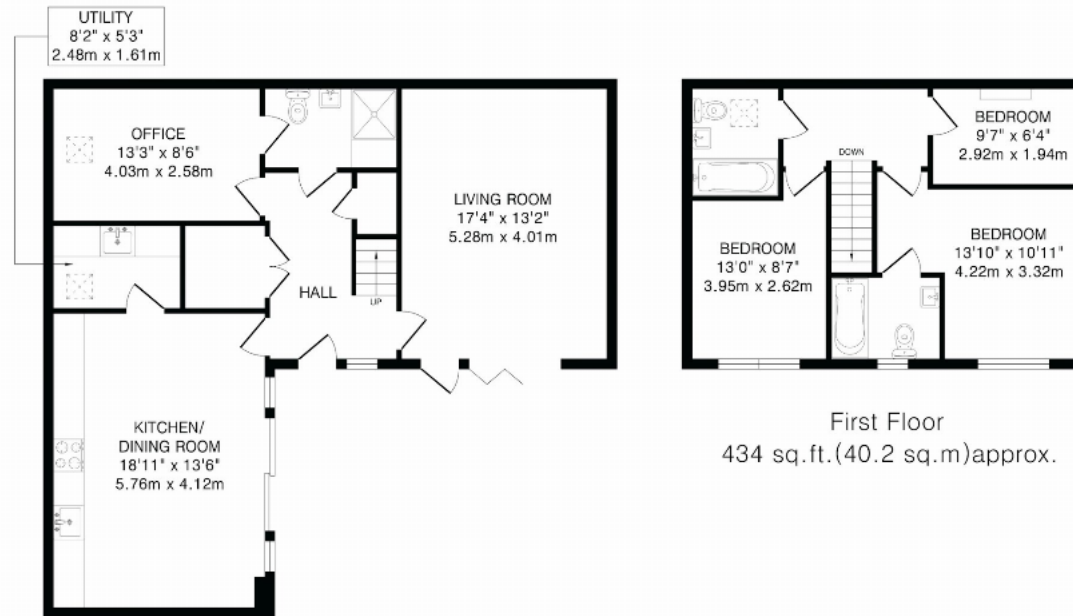


An architecturally striking new build home, finished to an outstanding specification, within walking distance of the station and historic town centre. A viewing is highly recommended to appreciate the quality fixtures & fittings throughout.









Ground Floor
831 sq.ft.(77.2 sq.m)approx.

First Floor
434 sq.ft.(40.2 sq.m)approx.

TOTAL FLOOR AREA: 1265 sq.ft.(117.4 sq.m)approx.
This floorplan is for illustration purposes only. The measurements and position of each element are approximate and must be viewed as such.



Although Pink Plan Ltd ensures the highest level of accuracy, measurements of doors, windows and rooms are approximate and no responsibility is taken for error, omission or misstatement. These plans are for representation purposes only as defined by RICS code of measuring practice. No guarantee is given on total square footage of the property within this plan. The figure icon is for initial guidance only and should not be relied on as a basis of valuation.



Important Information These particulars do not constitute an offer or contract in whole or part. The statements contained herein are made without responsibility on the part of Ashtons or the vendors and they cannot be relied upon as representatives of fact. In respect of floor plans, these are for illustrative purposes only. The measurement and position of each element is approximate and must be viewed as such. Intending purchasers should therefore satisfy themselves by inspection or otherwise as to their correctness. The vendors do not make or give, and neither Ashtons nor any person in their employment has any authority to make or give, any representation or warranty whatsoever in relation to this property. We offer a wide range of services through third party providers including solicitors, surveyors, removal firms, mortgage providers and EPC suppliers. We receive additional payments for administering suppliers quoting software and making referrals. You are not under any obligations to use these services and it is your discretion whether you choose to deal with these parties or your own preferred supplier. You should be aware the average payment we received in 2024 equated to £29.76 per referral.