



4 Bedrooms



3 Bathrooms



2 Receptions



EPC Band B

Freehold

Description

Completed this year and ready for immediate occupation, this stunning new build detached home on Highfield Road offers an enviable lifestyle. From the moment you enter, the attention to detail is unmistakable. The bright open plan kitchen/dining/living room is the heart of the home, ideal for relaxing and entertaining. It features a bespoke stylish shaker-style kitchen with a central island unit, Siemens integrated appliances, and herringbone ceramic tiled flooring. Wide bi-fold doors flood the space with light, opening onto a rear garden terrace and lawn. For flexible living, there are two additional reception rooms. These can serve as a ground floor bedroom with a separate shower room, a snug/playroom, or an office, depending on your needs. A separate utility room offers practicality, with access to the property's side. The first floor hosts an impressive principal bedroom with beautiful shaker-style wardrobes and a luxurious en-suite featuring a free-standing bath, separate shower, oak panelled wall, and double sink vanity unit. There is also a generous family bathroom, fully tiled, and two further double bedrooms, one with fitted wardrobes. The outstanding specification and quality fixtures throughout make this a desirable, low-maintenance home. Includes parking for two cars and a 10-year warranty for peace of mind. Viewing is strongly recommended to appreciate the high-end specification. Viewings by appointment.

Location

Sandridge is a thriving village with a range of local amenities and a highly regarded school. Enjoy pubs with delicious food and cosy atmospheres, scenic walks, and easy access to St Albans City (2.5 miles) and transport links to London.

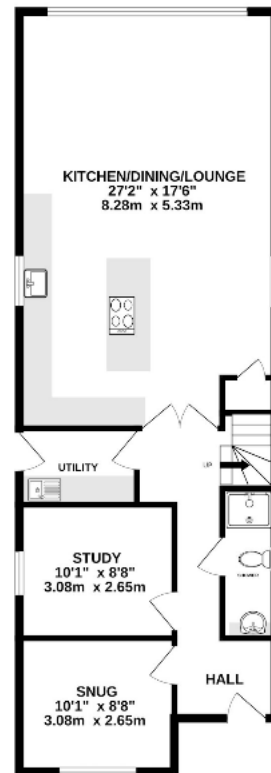
Buyers Information: - In compliance with the UK's Anti Money Laundering (AML) regulations, we are required to confirm the identity of all prospective buyers at the point of an offer being accepted and use a third party, Identity Verification System to do so. There is a nominal charge of £48 (per person) including VAT for this service. For more information, please refer to the terms and conditions section of our website.



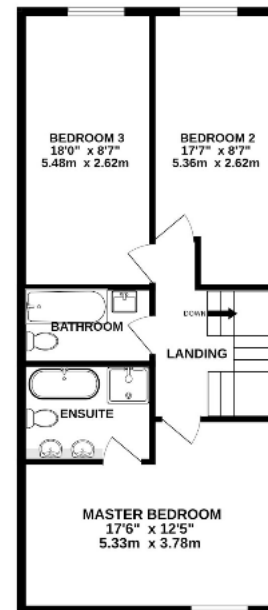




GROUND FLOOR



1ST FLOOR



TOTAL FLOOR AREA: 1,459 sq. ft. (136.5 sq. m.) approx.
 Whilst every effort has been made to ensure the accuracy of the floorplan contained herein, measurements of doors, windows, rooms and any other built-in appliances and no responsibility is taken for any errors, omissions or mis-statements. This plan is for illustrative purposes only and should not be used as a basis for any prospective purchase. The services, systems and appliances shown have not been fixed and no guarantee as to their operability or efficiency can be given.
 Made with Bluebeam®

Important Information These particulars do not constitute an offer or contract in whole or part. The statements contained herein are made without responsibility on the part of Ashtons or the vendors and they cannot be relied upon as representatives of fact. In respect of floor plans, these are for illustrative purposes only. The measurement and position of each element is approximate and must be viewed as such. Intending purchasers should therefore satisfy themselves by inspection or otherwise as to their correctness. The vendors do not make or give, and neither Ashtons nor any person in their employment has any authority to make or give, any representation or warranty whatsoever in relation to this property. We offer a wide range of services through third party providers including solicitors, surveyors, removal firms, mortgage providers and EPC suppliers. We receive additional payments for administering suppliers quoting software and making referrals. You are not under any obligations to use these services and it is your discretion whether you choose to deal with these parties or your own preferred supplier. You should be aware the average payment we received in 2024 equated to £29.76 per referral.