
 3 bedrooms

 2 bathrooms

 2 receptions

Freehold





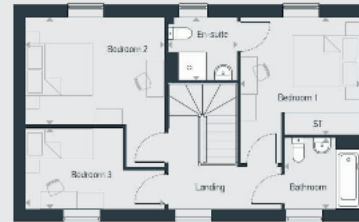


Ascots Green

The Sherrards - T1 3 bedroom home

Plots as drawn: 1051, 1086 and 1087

102.10 sq.m / 1,099 sq.ft



FIRST FLOOR



GROUND FLOOR

ST: Store WC: Water Closet HWC: Hot Water Cylinder

DIMENSIONS	m	ft
Living	5.42m x 3.34m	17'10" x 11'0"
Kitchen/Dining	5.42m x 3.72m	17'10" x 12'3"

DIMENSIONS	m	ft
Bedroom 1	3.40m x 3.33m	11'2" x 11'0"
En-suite	1.97m x 1.78m	6'5" x 5'10"
Bedroom 2	3.93m x 3.05m	12'11" x 10'0"
Bedroom 3	2.75m x 2.20m	9'1" x 7'5"
Bathroom	2.15m x 2.00m	7'1" x 6'7"



01707 515 001 | ascotsgreen@placesforpeople.co.uk
Ascots Lane, Welwyn Hatfield AL7 4HL

Please note: All layouts and floor plans, configurations, maps and information are intended for guidance only and accuracy of this information cannot be relied upon by prospective purchasers who must make their own enquiries to satisfy themselves by inspection or otherwise as to the correct details.

Important Information These particulars do not constitute an offer or contract in whole or part. The statements contained herein are made without responsibility on the part of Ashtons or the vendors and they cannot be relied upon as representatives of fact. In respect of floor plans, these are for illustrative purposes only. The measurement and position of each element is approximate and must be viewed as such. Intending purchasers should therefore satisfy themselves by inspection or otherwise as to their correctness. The vendors do not make or give, and neither Ashtons nor any person in their employment has any authority to make or give, any representation or warranty whatsoever in relation to this property. We offer a wide range of services through third party providers including solicitors, surveyors, removal firms, mortgage providers and EPC suppliers. We receive additional payments for administering suppliers quoting software and making referrals. You are not under any obligations to use these services and it is your discretion whether you choose to deal with these parties or your own preferred supplier. You should be aware the average payment we received in 2024 equated to £29.76 per referral.



01462 453195 | newhomes@ashtons.co.uk | ashtons.co.uk

Berkhamsted | Harpenden | Hertford | Hitchin | Redbourn | St Albans | Welwyn Garden City